

**TB 106**

## TECHNICAL BULLETIN

### INFORMATION ONLY

**For the Attention of :** Service Engineers, Installers, Trade Customers, Testers,  
Training Dept, H & S Manager

**Date :** 26-01-2011

**Product :** Maxilift MRLi

**Subject :** Introduction of NGV Electronic Valve

**Pages :** 2

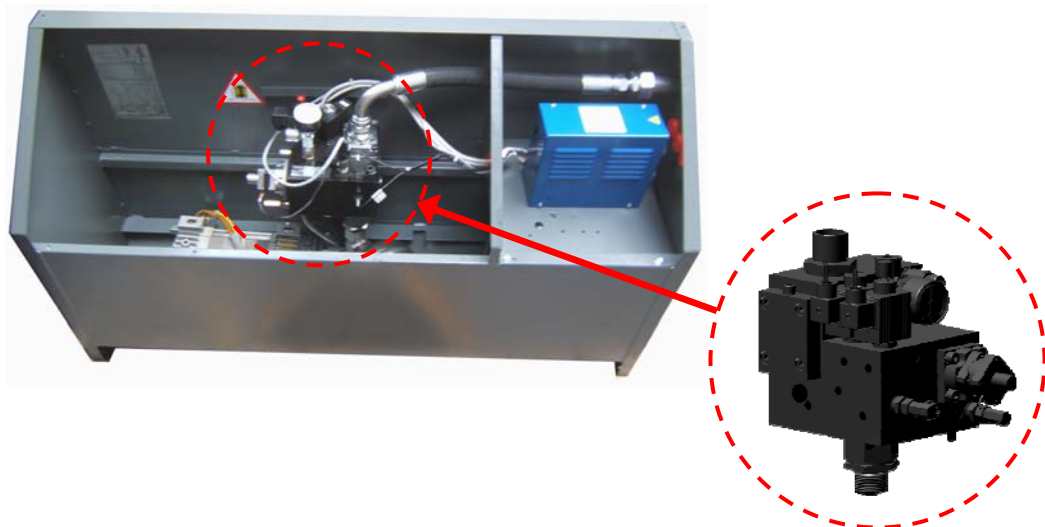
**Originator :** Stannah Lifts Ltd, Anton Mill, Andover, Hants SP10 2NX 01264 339090

### Detail

#### Introduction

During the first half of 2011 the GEV valve fitted to Maxilift MRLi models will be phased out and replaced by its successor the "NGV" (Next Generation Valve). NGV is the very latest electronic valve produced by GMV. The introduction of NGV comes after the completion of extensive in-house testing and on site field trials.

During the introductory period, a mixture of GEV and NGV pit mounted tanks will be dispatched to site whilst the existing GEV stock is run down.



**NGV electronic valve**

## Technical Information

NGV offers several technical advantages:

- simpler installation (*no encoder, no mechanical adjustment of the valve*)
- it negates the requirement for any auxiliary safety valves (*NGV has its own integral safety system*)
- improved reliability (*less moving parts*)
- soft stop feature (*provides improved ride quality*)

The physical size and shape of the MRL tank remains the same.

NGV utilises the same hand held programmer as the GEV.

Diagnostic software for analysis with a laptop or PC will be available for NGV. This will be similar to the GEV-DS diagnostic programme.

## Associated Equipment

Initially the NGV will be used in conjunction with the pawl device. The pawl device will be withdrawn when GMV introduce a fully certified version of NGV (see future developments below).

## Training

Training sessions will be offered to all site engineers. Training will be conducted at Andover on the MRLi test tower.

Trade - liaise with Graham Blakelock  
Installer - scheduled for 31<sup>st</sup> Jan & 2<sup>nd</sup> Feb  
Service - liaise with Will Roberts  
Testers - already conducted

## Future developments

EN81-2 A3 prevention of uncontrolled movement - the existing NGV design incorporates an integral safety system to detect failures of the main check valve but it is not fully compliant to the new requirements of the A3 amendment.

An A3 compliant version of the NGV has been certified by GMV's notified body and this unit will be introduced when it becomes available. GMV predict it will be available for shipping in April 2011.

The A3 compliant version will negate the need for the pawl device. A bulletin confirming this change will be circulated nearer the time.

## Summary

The GEV valve is being phased out during the first half of 2011. The NGV will gradually take its place as stocks of GEV are run down.

A version of NGV that is certified to EN81-2 A3 will enable the removal of the pawl device - expected introduction April/May 2011, confirmation bulletin to follow.